

**Flexy-OPTIONS**



# FlexyLab

Reactors and Accessories



## FlexyLab OPTIONS



### 250 ml Glass Reactor (Standard)

Standard glass reactor with a capacity of 250ml, equipped with propeller type stirrer and flexible PTFE temperature probe.



### Basket Stirrer

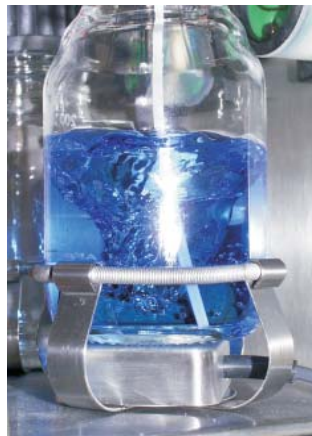
This basket stirrer is the result of close customer relations and co-operation, meeting their requirements. The stirrer achieves intensive mixing of highly viscous liquids and slurries even at low revolutions.



### 400ml Glass Reactor

The 400ml glass reactor is particularly suitable for quenching. The design permits monitoring of the reactor contents without removal of the reactor. The lid is the same as the standard lid for the 250ml reactor. Sensors/probes can be adjusted with adaptors.

Illustration: Reactor with stirrer, PTFE temperature sensor and pH probe (fitted with protective sheath for easier recognition)



### Magnetic Stirrer for Supply/Receiver Vessel

The highly efficient magnetic stirrer permits homogeneous dosing of 2 phase systems and suspensions.

The illustrations shows a powerful vortex using water.